

## BUILDINGS

### CLEANING OF HANDHOLDS IN A CLIMBING HALL

#### REQUIREMENTS

In climbing gyms, handholds and footholds have to be cleaned regularly. The abrasion from shoes, magnesium or chalk, skin residues and simply the daily dirt must be removed.

#### PREVIOUS TECHNIQUE

Until now, the parts were soaked in formic acid and then blasted with a high-pressure cleaner. In view of the size and lightness of the parts, spraying with a high-pressure cleaner in particular is not an optimal solution.

#### OUR SOLUTION

With the low-pressure hot cleaning process, the handholds and footholds could be cleaned easily and efficiently in the parts cleaning level of a 1000 SR. This was done in the shortest possible time, directly on site and thus without travel times to the high-pressure area, and without damaging the handles.

The working time required was a fraction of the time previously needed.

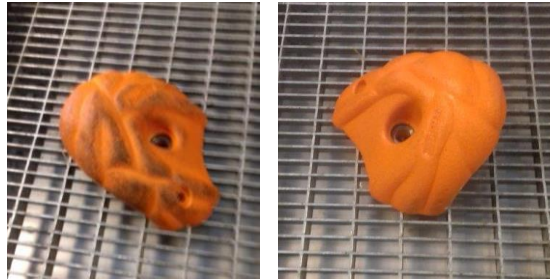
#### YOUR ADVANTAGES

- Devices can be used directly in the climbing hall, as they are mobile and self-sufficient - therefore no travelling time and independent of weather conditions.
- Fast and efficient cleaning due to high temperatures saves working time - often 80-90%.
- Parts are not "shot" through the hall as in the case of cleaning with high pressure - no damage and easy and comfortable work.
- No splash-back effects, no clouds of droplets, no aerosols - this protects employees and the environment.
- Cleaning with hot water and without chemistry, or at most, with very little chemistry, therefore minimal costs for procurement and disposal.
- Devices can be used universally, for example also for maintenance.
- Environmental protection: Less resources means higher environmental compatibility and significantly lower costs.



Cleaning of handholds and footholds in the parts cleaning level of a 1000 SR

- Occupational safety: Easy handling and no spraying effects mean more occupational safety for employees.



Handles before and after cleaning with  
low-pressure hot cleaning process

In summary: Low investment, resource-saving and environmentally friendly, at the same time cleaning directly on site in the climbing hall, low costs, significantly more comfortable and faster work, as well as high efficiency and quality.